



Sturgeon County is one of Canada's newest and most exciting destination for aerospace, defence and security industries investment. Meet and exceed Industrial and Technological Benefits (ITB) obligations and lower your investment cost by accessing a large and growing pool of regional suppliers, skilled labour and partners.



178 POTENTIAL SUPPLIERS
IN THE REGION



WORLD-CLASS
INNOVATION ECOSYSTEM



MULTIPLE MEDIUM AND LIGHT
INDUSTRIAL AREAS



HOME TO
CFB EDMONTON

SOAR WITH US

LOCATION, LOCATION, LOCATION

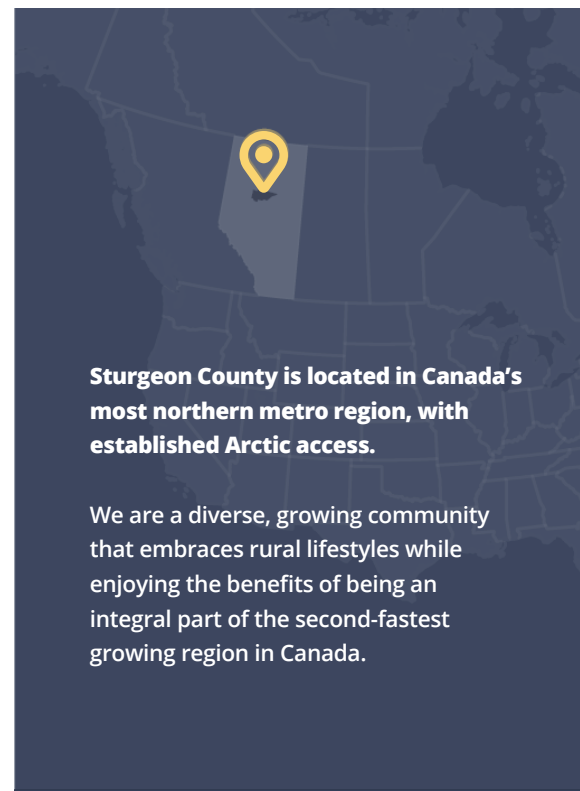
Locate in a leading manufacturing and engineering region situated in the heart of Albertan and western Canadian Armed Forces assets. We are home to CFB Edmonton and Villeneuve Airport.

DEEP TALENT POOL

The Edmonton Metro Region boasts a large and deep talent pool with seven post-secondary institutions, and over 100,000 enrolled students. These institutions excel in AI/ML, nanotechnology and autonomous systems training.

DEVELOPABLE LAND

Villeneuve Airport (ZVL), Sturgeon Industrial Park (SIP) and Sturgeon Valley, offer developable lands suited for a range of uses including pilot and aircrew training and simulation; Remotely Piloted Aircraft System (RPAS) development; Maintenance, Repair and Overhaul (MRO) activities; aircraft component manufacturing and warehousing and logistics, as well as convenient and modern residential community, etc.



Sturgeon County is located in Canada's most northern metro region, with established Arctic access.

We are a diverse, growing community that embraces rural lifestyles while enjoying the benefits of being an integral part of the second-fastest growing region in Canada.

15,885

people directly employed in Alberta's aerospace and defense sector.

Alberta Aerospace and Defense Sector Analysis, July 2019, OMX Data Analytics

521

companies in Alberta's aerospace and defense sector contribute \$3.25B directly to provincial GDP.

Alberta Aerospace and Defense Sector Analysis, July 2019, OMX Data Analytics

25%

of all UAV, geospatial data collection and analysis, and navigation and GPS firms are headquartered in Alberta.

Unmanned Systems Canada & Government of Alberta, 2017



Sturgeon County is proud of our strong relationship with the Canadian military and leadership at CFB Edmonton. We have done our homework on the specific needs and opportunities in the aerospace, defence and security industries. Sturgeon County provides a prime location for investment located at the nexus of armed forces assets in Alberta, low-cost/shovel-ready development areas and access to the region's innovators, suppliers and skilled labour. Sturgeon County is Canada's newest and most exciting destination for defence industry investment.

- Alanna Hnatiw, Mayor, Sturgeon County



PARTNERSHIP & TARGET INVESTMENT AREAS

- RPAS
- Training & Simulation
- Land Vehicles
- Aerospace Manufacturing & MRO
- Command, Control, Computers, Communications, Cyber (C5),
- Intelligence, Surveillance, and Recon-naissance (ISR)
- Joint Support & Sustainment



LET'S CONNECT

Work with our team to identify economic benefits including qualified suppliers, world-class research partners, incentives, and shovel-ready development sites.

ecdev@sturgeoncounty.ca
780-939-8367



InvestSturgeon.ca