

VALUE-ADDED ENERGY



Join us in shaping the future of global energy solutions. Sturgeon County has a wide range of opportunities for investment in the value-added energy sector, including the processing and extraction of oil and gas as well as distribution infrastructure development.



ENERGY VALUE CHAIN INCENTIVE

Stackable municipal tax exemption between 1.5 and 2.5%



GLOBAL MARKET ACCESS

Rail, road and sea connection networks



ENERGY ECOSYSTEM

>40 potential industry partners

RESOURCE-RICH ADVANTAGES

LEADING INDUSTRY CLUSTER

The County is a proud founding member of Alberta's Industrial Heartland Association (AIHA). Alberta's Industrial Heartland offers designated developable land for value-added energy products with advanced cluster and pre-built CCUS infrastructure.

COST-COMPETITIVE FEEDSTOCK

Access to stable and secure resources such as natural gas, liquids and crude oils sourced through the second largest oil and gas reserve in the world.

AVAILABILITY OF SUITABLE LAND

Over 100 square kilometres of the Heartland is located in Sturgeon County. This area offers designated developable land that has been pre-zoned I5, for heavy industrial use.



Sturgeon County is located in Canada's most northern metro region.

We are a diverse, growing community that embraces rural lifestyles while enjoying the benefits of being an integral part of the second-fastest growing region in Canada.

>840K

LABOUR FORCE

Access to over 840K people within an hour drive and eight post-secondary institutions with over 130K students.

- *Edmonton Global*

582 km²

INDUSTRIAL ENERGY CLUSTER

Alberta's Industrial Heartland is Canada and the world's largest hydrocarbon processing region with \$45 billion in industrial investment

- *Alberta's Industrial Heartland Association*

1.5B

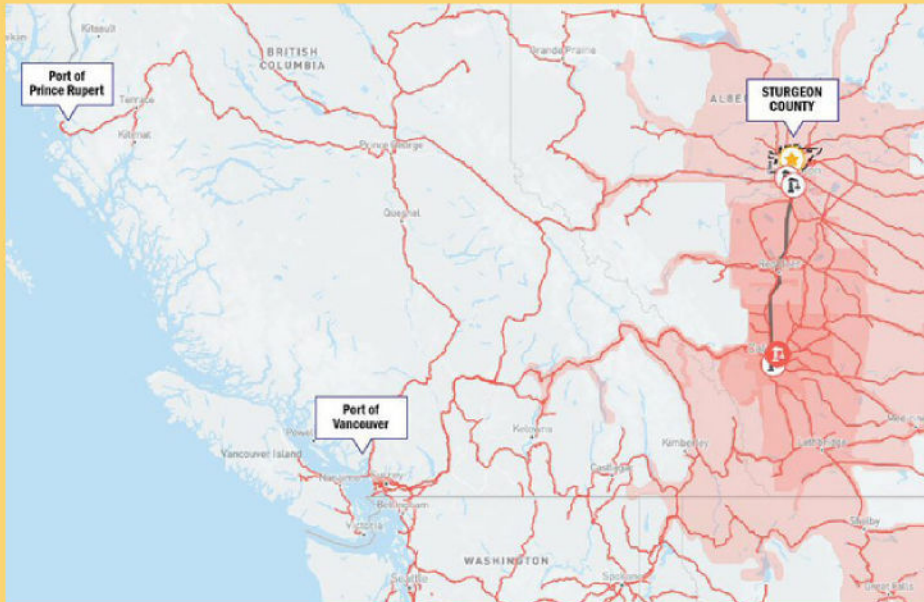
CUSTOMERS

There are trade agreements in place that allow access to 1.5B customers world-wide.

- *Invest Canada*

Connectivity and Logistics Advantages

The Edmonton Metro Region is linked by road and rail to major ports on Canada's West Coast, including the Port of Vancouver and Port of Prince Rupert.



PORT OF PRINCE RUPERT

Prince Rupert is North America's fastest growing port. It is the deepest port in North America and the closest to Asia.

It provides access to over 170 countries. Shipping from the Port of Prince Rupert can shave up to four days of shipping time to key Asian markets.

PORT OF VANCOUVER

Canada's largest and most diversified port. The port handles \$1 of every \$3 of Canada's trade in goods outside North America.



PARTNERSHIP & TARGET INVESTMENT AREAS

- Natural Gas Liquids
- Natural Gas
- Oil and Gas Extraction
- Other Electric Power Generation
- Other Petroleum
- Pipeline Transportation of Crude Oil

LET'S CONNECT

Work with our team to identify economic benefits including qualified suppliers, world-class research partners, incentives, and shovel-ready development sites.

ecdev@sturgeoncounty.ca

+1 (780) 939-8367

